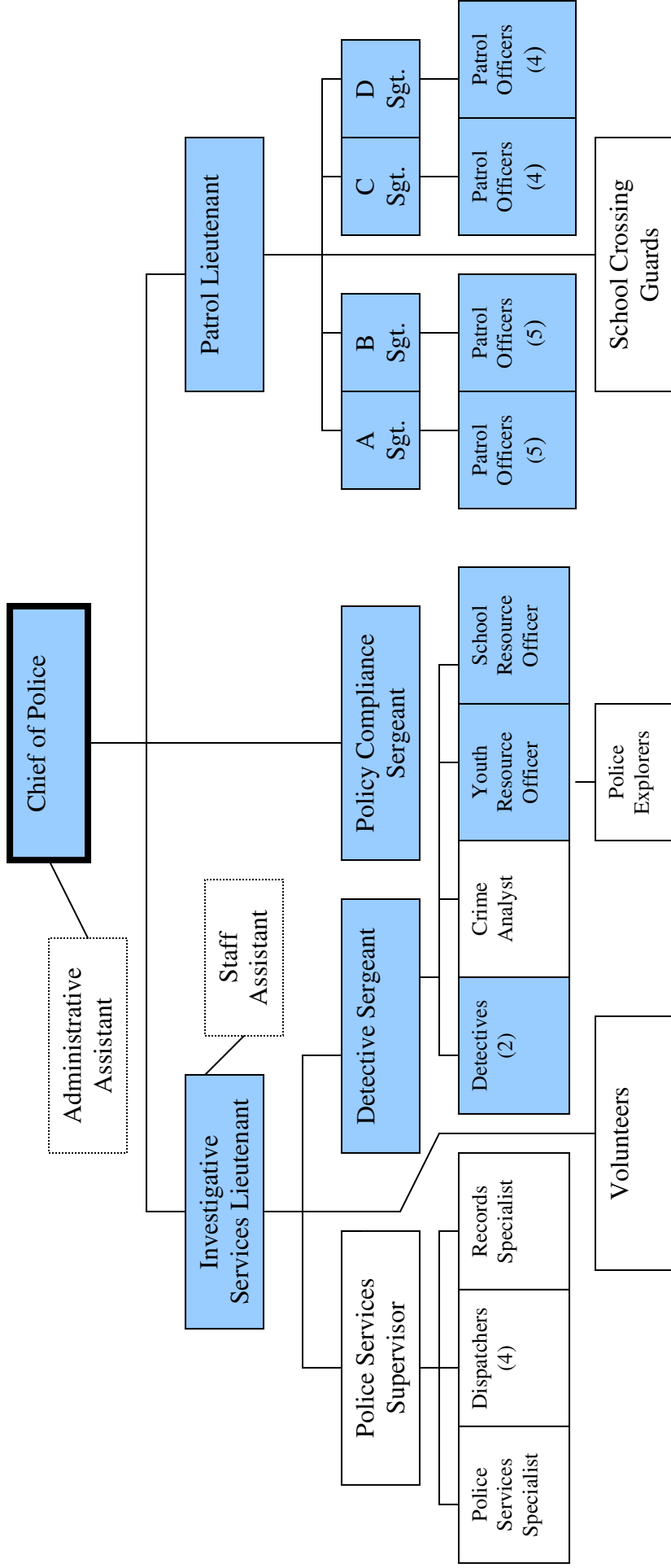


Gulfport Police Department—Organizational Chart



Responsibilities by Division/Unit

Investigative Services Division

- Public Information
- Crime Awareness & Prevention
- Fiscal
- Property & Evidence

Policy Compliance Unit

- Training Coordination
- Recruiting/Screening
- Accreditation
- Internal Affairs

Patrol Division

- Problem Oriented Policing
- Marine Patrol
- Special Events/Operations
- Special Enforcement Team

= sworn positions